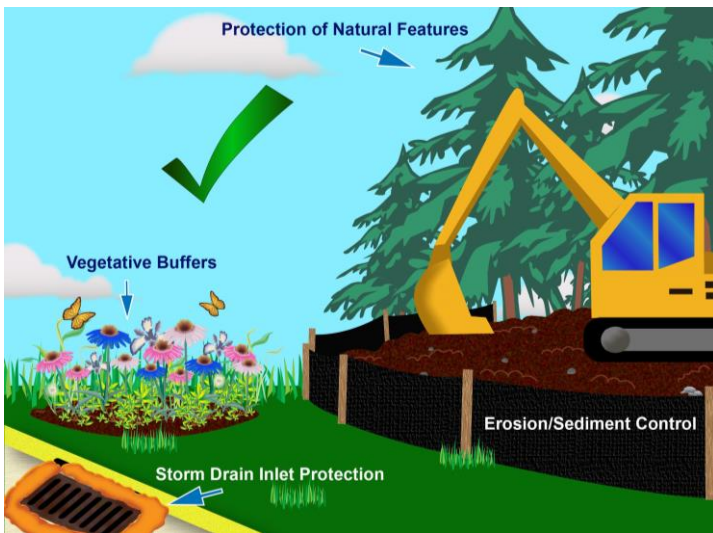




## Stop Erosion in its Tracks to Keep Our Waters Clean

### DO



### DON'T



### What can you do?



1. Find out if you need a Construction General Permit. Contact the Cheshire Conservation Commission before you disturb the soil. (Call 413-743-1690 x101 or email [executiveassistant@cheshire-ma.gov](mailto:executiveassistant@cheshire-ma.gov))
2. Pick a combination of erosion and sediment controls that work for your site. This includes practices that protect natural landscape features, like streams and wetlands, and stabilize soil.
3. Throughout construction, maintain silt fences, install protection around storm drain inlets and construction entrances.

### Why is this necessary?

- Water that falls on your construction site either soaks into the ground or runs off into storm drains.
- Water and pollution that goes into storm drains eventually ends up in lakes, rivers, and streams.
- Once these pollutants reach waterways, they can harm fish and other wildlife. They can even make our water unsafe to drink.
- Most importantly, allowing polluted runoff to leave your site and enter a storm drain or waterway is against the law.

Learn more at: <https://www.thinkbluema.org/for-construction>